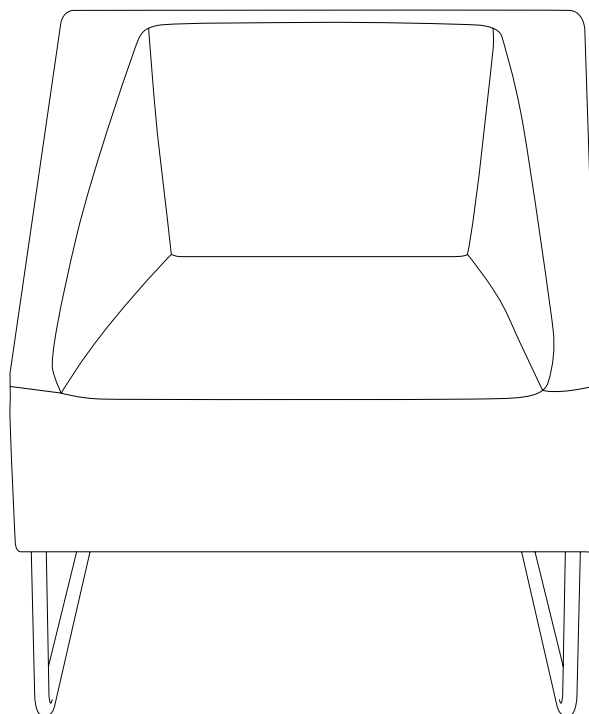


ITACA

ATTESA

DESIGN: STUDIO OMEGA









CARATTERISTICHE TECNICHE

technical features

caractéristiques techniques

ficha tecnica

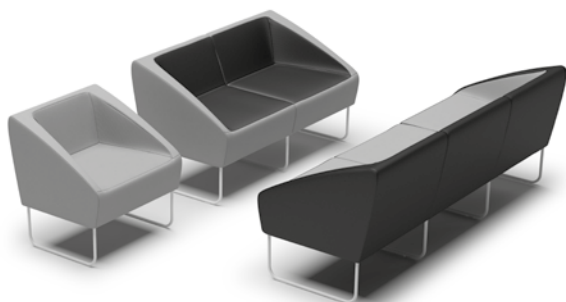
	IT	EN	FR	ES
STRUTTURA structure structure estructura	Inserto in acciaio	Steel main frame	Structure interne en acier	Insercion en acero
IMBOTTITURA padding rembourrage acolchado	Poliuretano espanso flessibile schiumato a freddo densita' 50 rc	High resiliency cold foam density 50 rc	Polyuréthane ecume' a' froid densite' 50 rc	Espuma en frio indeformable densidad 50 rc
BRACCIOLI armrest accourdoirs brazos	Strutturali con inserto in acciaio	Part of main frame	Acier et polyuréthane ecume' a' froid	Estructurales con insercion en acero
BASE FISSA fixed base base fixe version fija	Gambe in tubolare ø 16x2 con piedini antiscivolo verniciate bianche a polveri epossidiche	Steel tube ø 16x2 white epoxy powder coated. Slip-proof glides	Tube acier ø 16x2 en epoxy blanc. Patins anti-glisement	4 Patas tubo ø 16x2 con pies antideslizante pintados blanco a epoxy

MISURE	CODICE ART.	DESCRIZIONE
 ↑↓ 49 ↔ 65 ↗ 70	B1600 V	Poltrona con braccioli <i>single seater with armrests</i>
 ↑↓ 49 ↔ 65 ↗ 70	B1601 DX	Poltrona con bracciolo dx <i>Single seater with right armrest</i>
 ↑↓ 49 ↔ 65 ↗ 70	B1602 CT	Poltrona centrale senza braccioli <i>Single seater without armrests</i>
 ↑↓ 49 ↔ 65 ↗ 70	B1603 SX	Poltrona con bracciolo sx <i>Single seater with left armrest</i>
 ↑↓ 22 ↔ 56	GT013 B	Coppia gambe terminali verniciate bianco <i>Pair of side legs, white</i>
 ↑↓ 22 ↔ 56	GC02 B	Gamba centrale verniciata bianca <i>Middle leg, white</i>

BICOLORE: Di serie, viene realizzato solo nella stessa categoria e tipologia di rivestimento. Il primo codice si riferisce alle parti interne, sedile, schienale e braccioli; il secondo codice si riferisce alle parti esterne.

TWO COLORS: *Bicolor is standard on this item and is made in the same textile category and type only. The first textile code refers to the inside parts of seat, backrest and armrests; the second textile code refers to the outer.*

COMP-IT1



POLTRONA:

poltrona con braccioli B1600V
coppia gambe terminali GT013B

DIVANO 2 POSTI:

poltrona con bracciolo sx B1603SX
poltrona con bracciolo dx B1601DX
coppia gambe terminali GT013B
gamba centrale GC02B

DIVANO 3 POSTI:

poltrona con bracciolo sx B1603SX
poltrona centrale senza braccioli B1602CT
poltrona con bracciolo dx B1601DX
coppia gambe terminali GT013B
gamba centrale GC02B x2